

Murrayfield Avenue, Sleaford

A new development offering three bedroom houses



Property details

- 1 x two storey semi detached dwelling
- Entrance hall, cloakroom, lounge, dining kitchen with utility and lounge to ground floor
- Three bedrooms, one with en suite, and bathroom to first floor
- Single garage in block plus parking space.

Prices

From as little as £70,000 for a 50% share
Monthly rental on the remaining 50% would be £160.42. Service charge to cover buildings insurance is to be agreed.

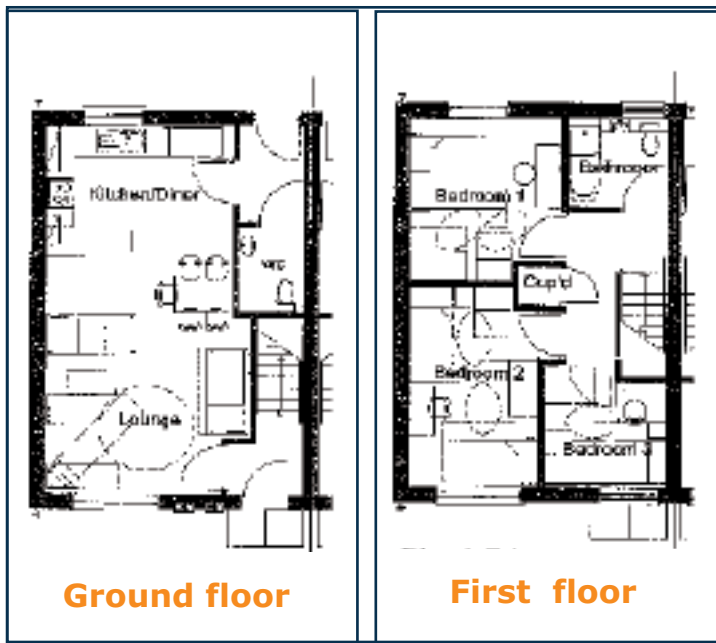
Additional service charges may apply to cover maintenance of any communal areas.

OPPORTUNITY TO BUY FURTHER SHARES IS AVAILABLE.

Reservation fee £200 (non refundable)

Viewing arrangements

If you would like to view the properties, please contact **Michelle Sleight** on **FREEPHONE 0800 027 2057.**



"Better homes and better services for better lives"

Shared Ownership