

# Murrayfield Avenue, Sleaford

A new development offering a three storey, three bedroom house



## Property details

- 1 x 3 storey semi detached dwelling
- Entrance hall, cloakroom, lounge, dining kitchen to ground floor
- Two bedrooms and bathroom to first floor
- Second floor being master bedroom with ensuite shower room
- Single garage in block plus parking space

## Prices

From as little as £37,500 for a 25% share. Monthly rental on the remaining 75% would be £257.81. Service charge to cover buildings insurance is to be agreed.

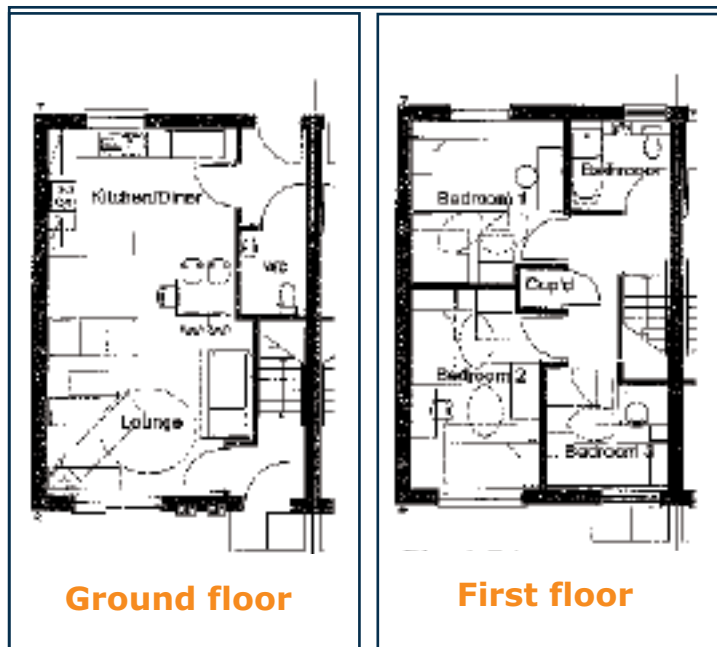
Additional service charges may apply to cover maintenance of any communal areas.

Reservation fee £200 (non refundable)

**OPPORTUNITY TO BUY FURTHER SHARES IS AVAILABLE.**

## Viewing arrangements

If you would like to view the properties, please contact **Michelle Sleight** on **FREEPHONE 0800 027 2057.**



**"Better homes and better services for better lives"**

# Shared Ownership