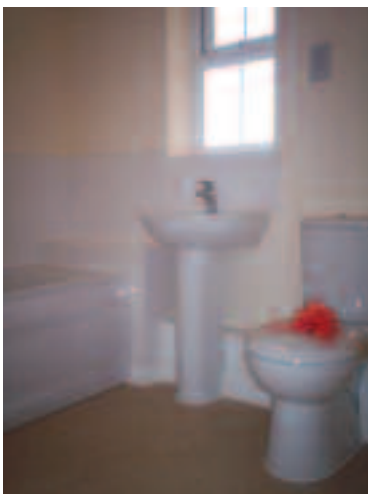


Montrose Grove, Rauceby, Sleaford

A new development offering a two bedroom ground floor flat at Montrose Grove, Rauceby



Features

- UPVC double glazed windows
- Fully central heated

Property details

- Two bedrooms
- Open plan lounge/kitchen
- Bathroom
- Allocated parking

Prices/rent

- £312 pcm

Estimated completion

- Available NOW

Viewing arrangements

If you would like to view the properties, please contact **Michelle Sleight** on **FREEPHONE 0800 027 2057**.

"Better homes and better services for better lives"

Rent to HomeBuy