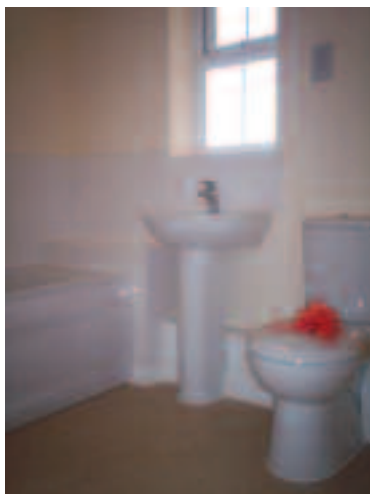


# Montrose Grove, Rauceby, Sleaford

A new development offering a two bedroom second floor flat at Montrose Grove, Rauceby



## Features

- UPVC double glazed windows
- Fully central heated

## Property details

- Two bedrooms
- Open plan lounge/kitchen
- Bathroom
- Allocated parking

## Prices/rent

- £312 pcm

## Estimated completion

- Available NOW

## Viewing arrangements

If you would like to view the properties, please contact **Michelle Sleight** on **FREEPHONE 0800 027 2057.**

"Better homes and better services for better lives"

Rent to HomeBuy