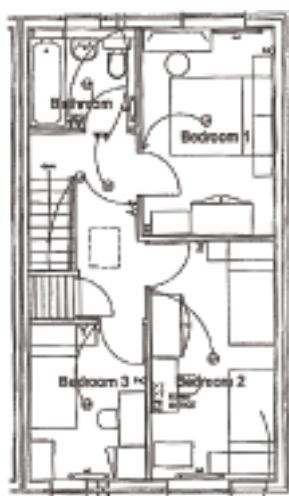
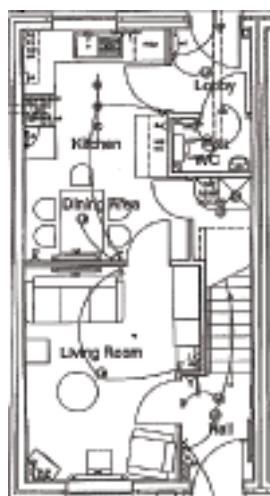


Church Lane (Tamer Road), Sleaford

A new development of three bedroom houses at Church Lane, Sleaford



Features

- UPVC double glazed windows
- Fully central heated
- 10 year NHBC warranty

Property details

- Modern kitchen/diner
- Lounge
- Downstairs restroom with WC and wash hand basin
- Three bedrooms
- Upstairs family bathroom

Prices/rent

TBC

Estimated completion

- October 2010

Viewing arrangements

If you would like to view the properties, please contact

Michelle Sleight on
FREEPHONE 0800 027 2057.

"Better homes and better services for better lives"

Rent to HomeBuy