



Kingfisher Close, Cherry Willingham

Three bedroom

£169,950.00

We are incredibly proud to announce that we are working in conjunction with Lindum Construction to develop phase two of Kingfisher Close, Cherry Willingham.

Phase two will include six brand new two bedroom homes. The layout boasts front aspect lounge, and a modern kitchen diner to include fitted kitchen, hob and extractor hood and patio doors overlooking to the rear garden. Upstairs are two double bedrooms and a family bathroom with shower over bath. Flooring provided to kitchen, bathroom and downstairs WC.

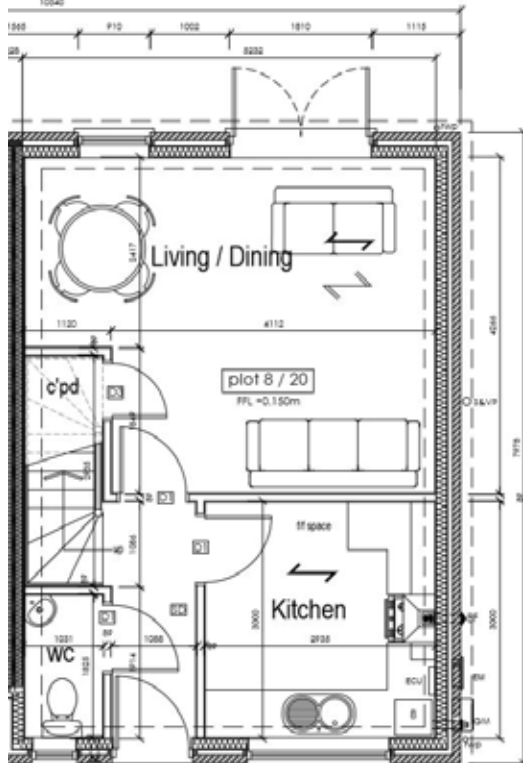
Externally there is parking for two cars with each plot and a turfed rear garden. Reservations are currently being taken from Customer's looking to buy "off plan". If you would like further information or to reserve please call our Commercial Team on 01427 678000.



Find out more about these homes at www.acisgroup.co.uk
or call our Commercial Team on **0800 027 2057**.



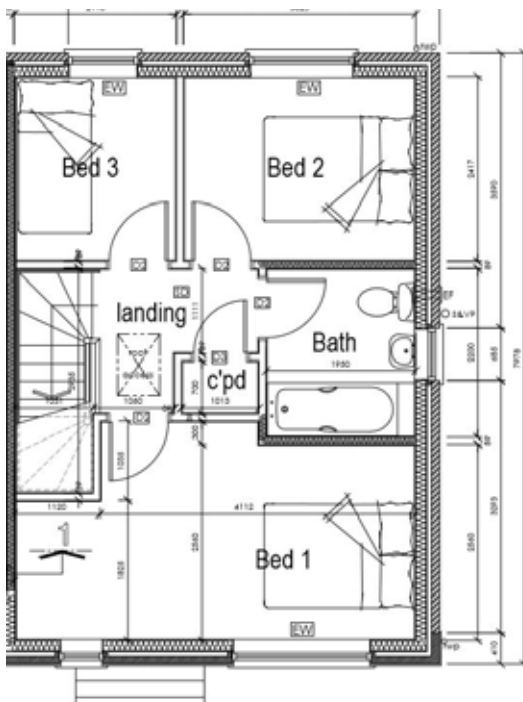
Ground floor



Home details

- Three bedrooms
- Semi detached house
- Lounge diner with patio doors onto rear garden
- Modern kitchen
- Integrated cooker, hob and extractor
- Downstairs WC
- Upstairs bathroom with white suite to include shower over bath
- UPVC double glazing
- Gas central heating
- NHBC warranty
- Off road parking
- Outstanding village location
- Good access to Lincoln and transport links

First floor



Find out more about these homes at www.acisgroup.co.uk or call our Commercial Team on **0800 027 2057**.

