



# Your guide to asbestos in the home





**This leaflet explains how Acis Group Ltd manages asbestos, what materials may contain asbestos and what you should do if you think you have asbestos in your home.**

**Remember:**

If asbestos is left undisturbed or undamaged, it is not harmful and poses no risk to health.

**What is asbestos?**

Asbestos is a naturally occurring mineral fibre, previously used in building materials because it:

- is chemically resistant
- is fire resistant
- provides insulation

Properties built before 2000 could contain some form of asbestos material.

Properties built from 2000 are unlikely to contain asbestos building materials or products. All use of asbestos was banned in 1999 in the UK.





## Why could asbestos be a problem?

Asbestos is not a problem if it is undamaged and is only potentially dangerous when fibers become airborne. So day to day living in a property containing asbestos materials is not normally a significant risk.

However, DIY activities such as drilling, sawing, sanding or scrubbing could result in a brief, localised release of asbestos fibres, which is why we ask that you contact us before undertaking this type of work. Some improvement work requires our permission beforehand regardless of any potential risks.

If you think a material might contain asbestos, do not work on it. Call our Customer Service Centre on **0800 027 2057** for advice.



## Minimising the risk of asbestos

As part of ongoing improvements to our properties, we may need to inspect your home from time to time. Asbestos materials that are in good condition are often best left where they are and monitored on a regular basis.

When asbestos materials are damaged, they must be repaired or removed by a specialist contractor. We will arrange for this to happen at no cost to you. If you are a leaseholder or shared ownership customer, please contact us for advice.

# Where might we find asbestos?

## Asbestos in the home

\*Asbestos usage has declined dramatically over the years and in all cases, its usage has been banned. As a result, older homes are more likely to be at risk.



### **A Exterior surfaces**

1. Roof felt and shingles
2. Window putty
3. Cement asbestos board siding / undersheeting

### **B Insulation**

1. Vermiculite insulation
2. Batt insulation

### **C Flooring**

1. Vinyl asbestos flooring material

### **D Interior surfaces**

1. Sprayed-on ceiling material
2. Textured paint

### **E Boilers, heating and piping**

1. Heat source covering
2. Door gaskets
3. Duct lining
4. Wall gaskets and lining

### **F Electrical equipment**

1. Recessed lighting
2. Wiring insulation
3. Fuse boxes
4. Outlets

### **G Appliances**

1. Refrigerators / freezers
2. Range hoods
3. Woodstoves (heat reflectors)
4. Clothes dryers

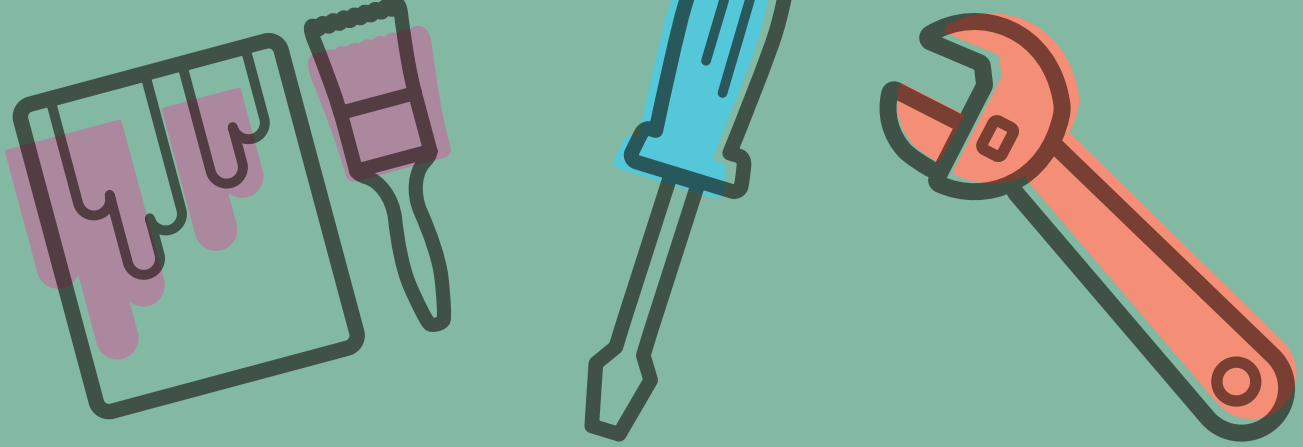
\*Not shown: dishwashers, toasters, slow-cookers, portable heaters, hair dryers

### **H Miscellaneous**

1. Fireplace logs

### **J Automotive**

1. Brake linings, gaskets, and clutch facings



## What you should do before starting DIY?

Major repairs and maintenance to your home, such as kitchen and bathroom replacement, is our responsibility.

You should always get permission from us before undertaking works such as DIY in your home. Please check your tenancy agreement or lease if you are unsure. This will allow us to check your property and advise what you can/cannot carry out.

If you believe you've been accidentally exposed to asbestos while carrying out DIY work, we ask that you follow the basic procedure below until you have spoken to our Customer Service Centre.

1. Immediately leave the affected area, closing any doors and windows as you go
2. Where possible remove your outer layer of clothing and shoes and leave them in the affected area
3. Using wet wipes or a damp rag wipe any exposed skin, such as hands and face and your hair to remove any major dust and place the rags in the affected area
4. Remain close to but not inside the affected area to prevent the spread of contamination to other areas of the property
5. Call our Customers Service Centre so that we can advise you further and arrange help
6. Under no circumstances attempt to repair the damage, clean up any debris or go back inside the affected area



## Further advice

If you still have concerns about asbestos in your home please call our Customer Service Centre on **0800 027 2057**

### Remember:

Asbestos materials will cause you no harm if they are left alone.

Additional advice on asbestos in the home can be obtained from the Health and Safety Executive (HSE), Environmental Protection UK, the Environment Agency or your local authority.

Acis House  
Bridge Street  
Gainsborough  
Lincolnshire  
DN21 1GG

Tel - 0800 027 2057

Email – [info@acisgroup.co.uk](mailto:info@acisgroup.co.uk)



CUSTOMER  
SERVICE  
EXCELLENCE

